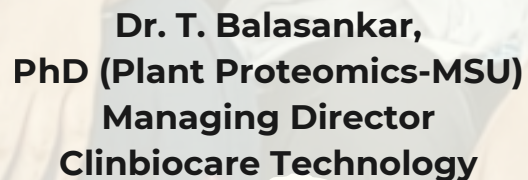


Winter Internships





Empowering rural students through
biotechnology exposure

- Collaborating on impactful scientific projects
- Supporting multiomics research and innovation
- Advancing omics through experimental optimization



- **Exclusive Hands-On training**
- **Scientific Communications**
- **Career guidance**
- **Journal Clubs**
- **Intellectual debates**
- **Library Activities**
- **Seminars & Assessments**
- **Sci-fi games**

Gel-Based Proteomics

- Different Methods of Protein Extraction
- Estimation of Total Protein - Bradford Assay
- Separation of Total Protein using SDS-PAGE
- Comparative Proteomic Profiling of Different Samples
- Identification of Distinct Proteins Having a Significant Fold Change in Expression

Microbial Genomics

- Microbial DNA Isolation
 - DNA Extraction
 - Agarose Gel Electrophoresis
 - Quantification of Extracted DNA
- PCR Amplification of Isolated DNA
 - RESistance Gene Profiling
 - VIRulence Gene Profiling



Biomarker studies

- Biomarkers and Significance
- Clinical Samples Processing
- Protein Extraction
- SDS-PAGE Analysis
- Biomarker Profiling using Two-Dimensional Gel Electrophoresis
- 2D gel Image analysis
- Mass Spectrometry
- Protein-Protein Interaction Analysis
- Validation of Potential Biomarkers - qPCR



Western Blotting

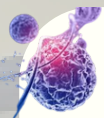
- Introduction to Immunotechniques
- Experimental Relevance in Various Applications
- Sample Preparation
- Gel Electrophoresis & Transfer
- Immunodetection - Protein Detection using Antibodies
- Image Acquisition
- Image Analysis & Result Interpretation



Cancer Genomics

- Deep Dive into Cancer Genomics
- Processing Cancer Cells/Tissues
- RNA Extraction
- cDNA Synthesis
- mRNA Expression Analysis - qRT-PCR
- Interpretation and Analysis of Results



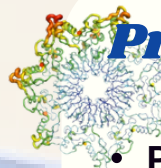


Oncoproteomics

- Biomedical Significance of Proteomics in Oncology
- Cancer Cells/Tissues Processing
- Oncoprotein Extraction
- Estimation of Total Protein
- Differentially Expressed Protein Analysis
- Mass Spectrometric Analysis

Medical Microbiology

- Understanding the Importance of Clinical Microbiology
- Isolation of Microbes from Clinical Samples
- Biochemical Characterization of Isolated Individual Isolates
- Prevalence of MDR Isolates in Isolated Individuals - Antibiotic Susceptibility
- Analysing the Biofilm Forming Ability of isolates



Protein Visualization & Image Analysis

- Protein Extraction from Various Samples & 2DGE
- Different Methods of Visualization
 - Coomassie Brilliant Blue staining
 - Silver Staining
 - Cy2, Cy3, Cy5 & Sypro Ruby PTM Staining
 - ProQ (Emerald, Diamond) Staining
- Image Analysis

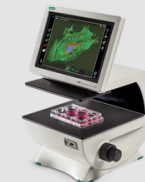


Phytochemistry

- Collection of Plant Material
- Extraction of Plant Material
- Phytochemical Screening
 - Saponins
 - Tannins
 - Flavonoids
 - Quinones
 - Terpenoids
 - Alkaloids
 - Phenols
 - Reducing Sugar
 - Carboxylic Acid
 - Amino Acids

Bioinstrumentation

- 2D Electrophoresis Apparatus (GE Healthcare)
- RT-PCR (Qiagen)
- Gradient PCR (Bio-Rad)
- ChemiDoc MP (Bio-Rad)
- Fluorescent Cell Imaging System (Bio-Rad)
- Trinocular Inverted Microscope
- Refrigerated Max Speed Centrifuge (Beckman Coulter)
- UV-Vis Spectrophotometer (Jasco)
- CO₂ Incubator
- ELISA Reader
- PRO656-Probe Sonicator
- Milli-Q-Unit (Merck Millipore)
- Biosafety Cabinet (BSL-2)
- Deep Freezer (-80 °C)
- Shaker Incubator



“In Research, failure isn't defeat – it's data”



Clinical Proteomics

- Processing of Clinical Samples
- Methods of Protein Extraction
- Protein Separation using Two-Dimensional Gel Electrophoresis
- Protein Interaction Network Analysis
- Analysing the Significance of Proteins in Diagnostics



Cheminformatics

- Two-dimensional and Three-Dimensional Structural Analysis
- Chemical Compounds and Their File Formats
 - Tools to Convert File Formats
- ADMET analysis
 - SWISS ADME
 - PKCSM
 - Pro Tox 3.0



Immunology

- Enzyme Linked Immuno Sorbent Assay (ELISA)
- Serum Proteomic Analysis
- Separation of Serum Proteins
- Proteomic Analysis of Body Fluids
- Identification of Proteins Having Significant Expression Difference



Nanotechnology

- Nanoparticles and Their Significance
- Synthesis of Nanoparticles
- Characterization of Synthesized Silver Nanoparticles
 - UV-Vis Characterization
- Analyzing the Antimicrobial Potential of Synthesized Nanoparticles
- Evaluating their Potential in Dye Degradation



Medicinal Chemistry

- Collection of Medicinal Plants
- Primary Steps in Extraction
- Extraction using Different Methods
 - Decoction
 - Hot infusion
- Standard Procedure-Magnetic Stirring
- Analyzing the Presence of Bioactive Compounds - Phytochemical Screening
- Evaluating the Antioxidant Potential of the Medicinal Plant - DPPH Quantitative Assay



Herbal Technology



- Collection of Herbs & Extraction
 - Decoction
 - Hot Infusion
 - Standard Procedure - Magnetic Stirring
- Screening Phytocompounds
- DPPH Quantitative Assay
- Antimicrobial Activity of Herbal Extract Against Pathogenic Strains
- Determination of MIC
- Antibiofilm Activity of the Extract

Bioinformatics



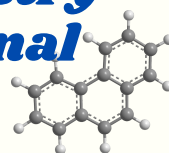
- Introduction to Bioinformatics
- Databases & Learning environments
 - Basic to Advanced
- Phylogenetic Tree Construction
- Protein Interaction Analysis

Plant Proteomics



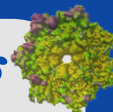
- Plant Proteomics & Necessity
- Ammonium Acetate Precipitation of Plant Proteins
- Quantification of Plant Proteins using UV-VIS Spectrometer
- Initial Screening of Protein Separation
- Global Proteomic Analysis
- Identification of Differentially Expressed Proteins

Natural Chemistry & Computational Biology



- Extraction of Phytocompounds from Medicinal Plants
- Screening Phytochemical Property of the Plant
- Surfing Potent Compounds using Databases
- *In Silico* Docking Studies
- Protein-Ligand Interaction Visualization - Biovia Discovery Studios

Molecular Docking



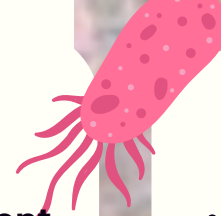
- Exploring Targets and Ligands using Databases
- ADMET Analysis - SWISS ADME, Pro Tox 3.0
- Molecular Docking using Autodock
- Visualization using Biovia Discovery Studio
- Validation of *In Silico* Studies





Environmental Microbiology

- Collection of Different Environmental Samples
- Isolation of Microbes from Different Samples
- Analyzing the Prevalence of Resistant Genes Among the Isolates
 - DNA Extraction
 - Agarose Gel Electrophoresis
 - PCR Amplification of Resistant Genes
 - Result Interpretation



Food Microbiology

- Collection of Samples from Contaminated Foods
- Isolation of Pathogenic Strains
 - Biochemical Characterization
 - Identification of Isolates
- Screening a Potent Antimicrobial Component Against the Isolated Pathogenic Strains



Bioremediation

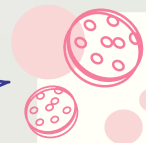
- Isolation of Microbes from Different Environmental Samples
- Characterization of Isolates Using Biochemical Assays
- Analysing Their Potential in Dye Degradation
- Optimization of Isolates in their Dye-Degradative Ability
- Identification of Isolates Having Dye Degrading Ability

Screening Probiotics

- Introduction to Probiotics
- Collection of Different Probiotic Sources
- Isolation of Probiotics
- Biochemical Characterization
- Evaluating the Antimicrobial Potential of Isolated Probiotic Strains
 - Preparation of Cell-Free Supernatant
 - Analyzing the Antimicrobial Potential - Agar Well Diffusion Assay

Profiling Multi Drug Resistant Strains

- Isolation of Microbes from Clinical Samples
- Screening MDR isolates - Antibiotic Susceptibility
- Prevalence of Resistance among Different Isolates
 - DNA Extraction
 - Agarose Gel Electrophoresis
 - Screening the Existence of Resistant Genes - PCR Amplification
 - Amplified Product Detection



Microbial Proteomics

- **Microbial Sample Processing**
 - Protein Extraction from Microbial Samples
- **Bradford Assay - Quantification of Total Protein**
- **Advanced Proteomic Analysis of Bacterial Strains**
 - SDS PAGE Analysis
 - 2D Gel Electrophoresis (2DGE)
 - Analysing the Differentially Expressed Protein Spots using Melanie Software



Interdisciplinary Domains

- Prediction to Validation
- Antigen-Antibody Interaction (ELISA)
- Molecular Docking to Antimicrobial Activity
- Phytocompound Extraction & Phytochemistry
- Proteogenomics Studies
- Nature's Cure - Phytochemistry & Antimicrobial Activity
- Molecular Biology Techniques
- Biomarker Validation Analysis using ELISA & qRT-PCR



“We are not just service provider rather your supporting hands to overcome all your hurdles in scientific experiments and troubleshooting”

“One Stop solution for All Your Biotechnology Needs !!!” Our Collaborators!!!

Food & Accomodation Available

Reach us

- +91 98848 75192
- 11/279-5, Thendral Nagar, Theatre Road,
Gandhipuram, Gunaramanallur,
Mathalamparai, Tenkasi - 627814
- www.clinbiocaretechnology.com
- info@clinbiocaretechnology.com
- Clinbiocare Technology
- clinbiocare
- CLINBIOCARETECHNOLOGY

2016

21+ Years of
Experience

250+ Completed
Projects

500+ Happy
Clients

1K+ Trained
Students

2025

